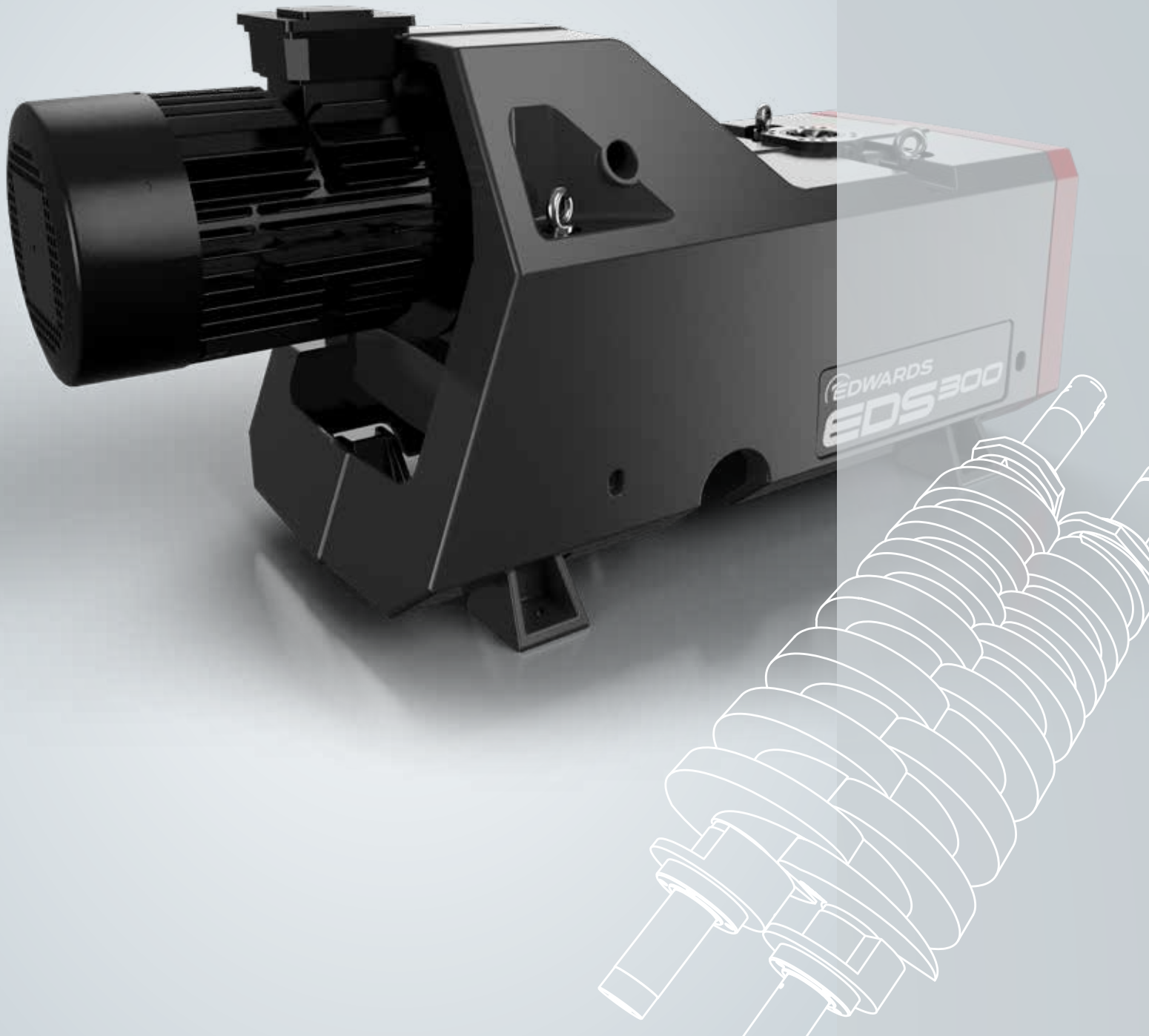


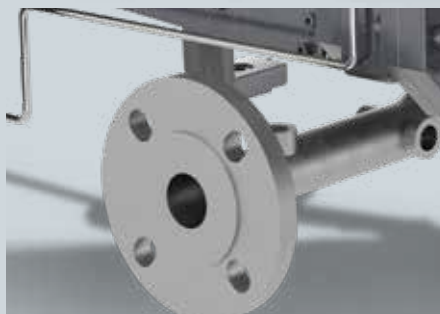
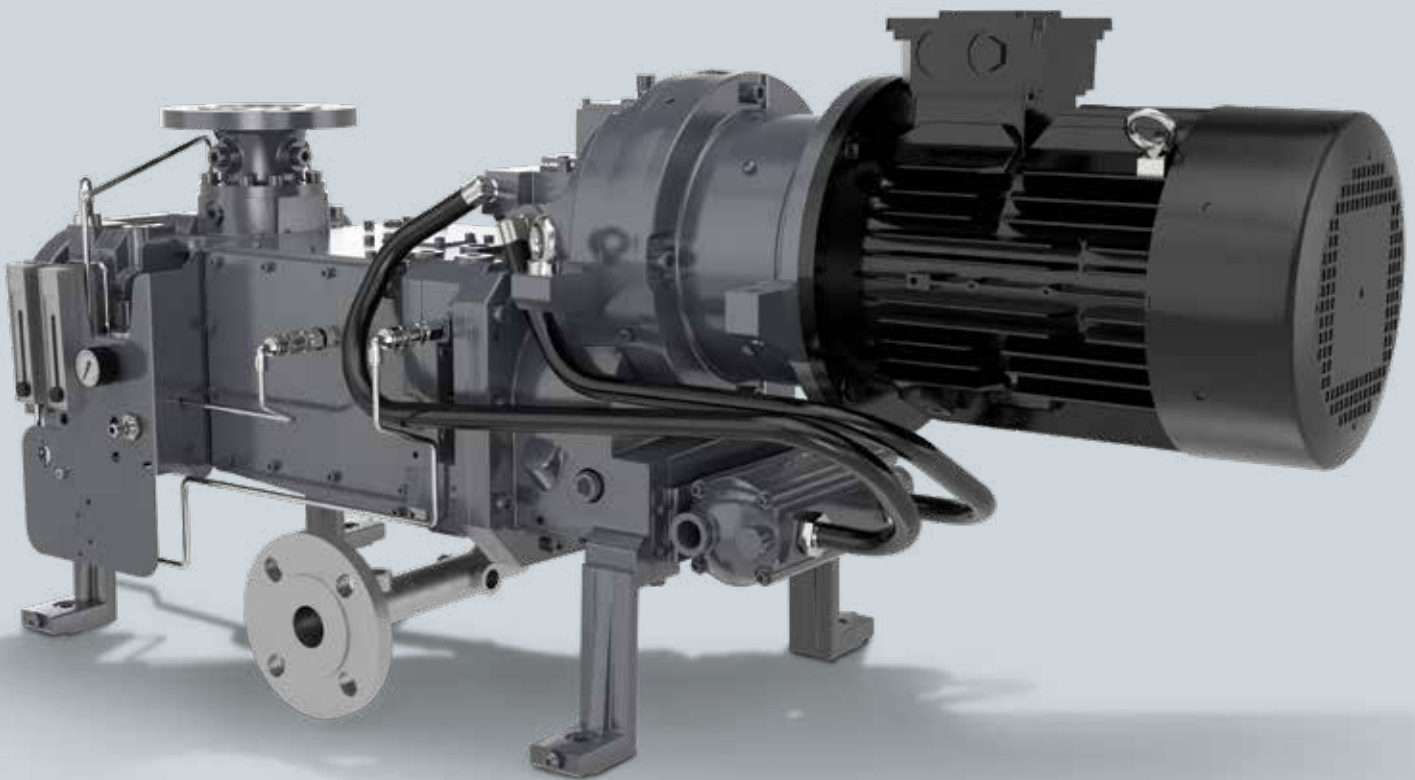
# EDS Series Dry Screw Vacuum Pumps



# EDWARDS THE PARTNER OF CHOICE

**Edwards is a world leader in the design, technology and manufacture of vacuum pumps for industrial applications with over 95 years' history.**

We believe in delivering results that bring value to our customers by using our breadth of industry experience to identify and apply solutions. Using the most innovative and up-to date modelling techniques, we can optimise the pumping configuration for customers to provide a system design giving the maximum performance in the most reliable and cost-effective way.



# State-of-the-Art Technology Made Simple

Edwards' new range of EDS dry screw pumps features an innovative design which creates a new benchmark in the screw pump market. An intricate piece of engineering, built to the exacting standards and quality demanded by our customers, the new dry screw pump provides you with a trouble-free and cost-effective solution to meet your needs.

Water-cooled, the EDS range is robust and efficient. Its second-to-none contaminant handling capability in the harshest industrial and chemical conditions make these pumps the smart choice for your industry. Cool and simple, easy to service, high speed, the EDS vacuum pumps offers all the extra performance you need for the harshest and toughest industrial and chemical applications.



## EDS Dry Vacuum Pump Features:

- Plug and Play system
- Innovative and sturdy screw design
- Tapered variable pitch dry screws
- High speed operations
- Unparalleled uptime
- Quick pump downtimes
- Robust water cooling system
- High tolerance for particulates
- Air blast cooling variant option available
- Closed loop liquid cooling system
- Safe and flexible for chemical processing industry
- Configured for hazardous area installations
- Certified for global explosion standards

# Pump Technology

## SIMPLE

*Industry leading state of the art screw vacuum technology simply packaged*

- **Trouble free peace of mind:** ease of installation, systemisation, support and service
- **Pumping:** designed to be simply reliable

## FASTER

*Extra performance to meet modern day technologies*

- **Quick pump down times:** higher roughing speeds get the job done quicker
- **High pumping speeds:** gives more throughput where it matters

## FLEXIBLE

*Designed for a changing global market*

- **Safe and compliant:** easily configured for hazardous area installations
- **Engineer To Order:** basic modular building blocks for special pumping systems

## PROCESS CAPABLE

*Mechanism proven in the most demanding applications*

- **Extended MTBS:** purge protection options to prolong life on harsh processes
- **Increased Process Uptime:** survives process mishaps and contaminant ingestion

## ROBUST

*A truly industrial machine for the most challenging installations*

- **Installation options:** highly tolerant water cooled and air blast cooled standard products
- **Protection:** High IP ratings and easily cleanable protective canopies



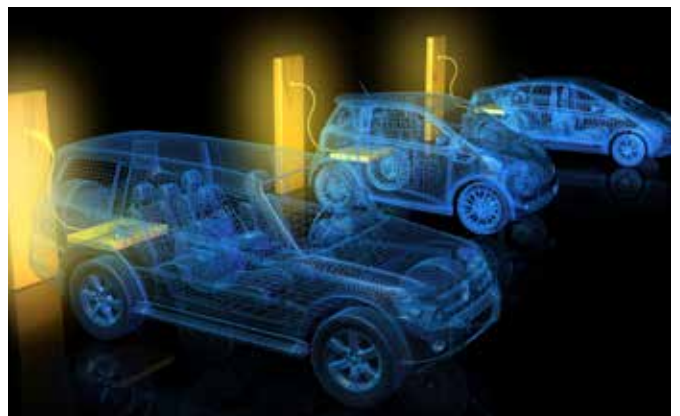
Air cooled variant



# Applications

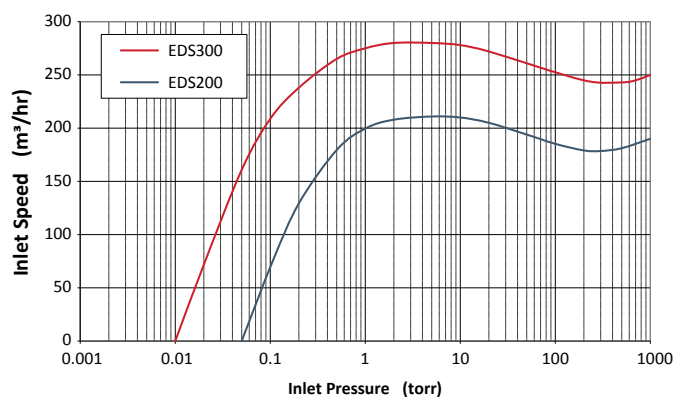
The EDS range is suitable for a range of applications in various industries including:

- Lithium Ion Batteries
- Freeze Drying
- Solar Cell Manufacturing
- Fine Chemicals
- Thin Film Deposition
- Pharmaceuticals
- Automotive Coating
- Industrial Glass Coating
- Heat Treatment
- Brazing
- Plastic Extrusion

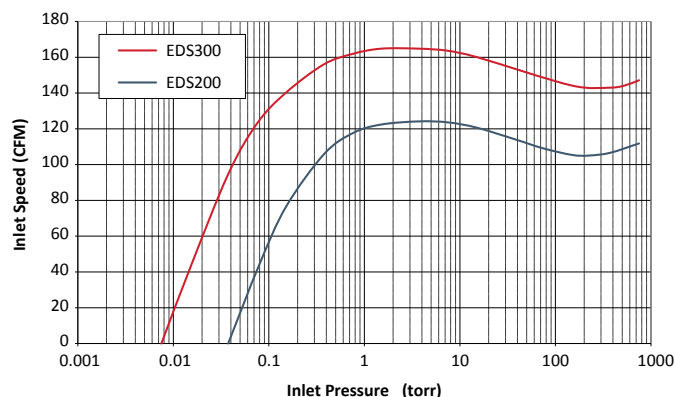


# Performance curves

## EDS 200-300 (Metric)



## EDS 200-300 (Imperial)



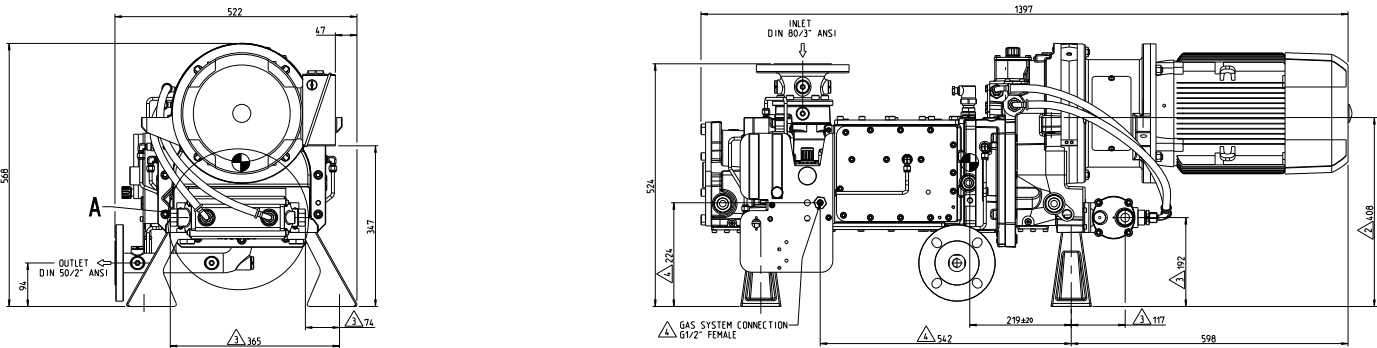
# Technical Specifications

			Metric					
			Water Cooled		Air Cooled		Chemical	
			200	300	200	300	200	300
Performance	Peak Pumping Speed	m³h <sup>-1</sup>	210	>280	210	>280	210	>280
	Ultimate Pressure	mbar	<0.05	<0.01	<0.05	<0.01	<0.05	<0.01
Full Load Power	@ ultimate pressure	kW	4.1	4.5	4.1	4.5	4.1	4.5
	@ peak pumping load	kW	6.4	8.2	6.4	8.2	6.4	8.2
Vacuum Connections	Inlet connection		ISO63				DIN80/3"ANSI	
	Exhaust connection		NW40				DIN50/2"ANSI	
Cooling Water	Connection		G1/2" female				G1/2" female	
	Flow	lmin <sup>-1</sup>	<8				<8	
	Supply pressure (max)	bar	7				7	
	DP across pump (min)	bar	0.5				0.5	
	Temperature	°C	5-40				5-40	
Purge Gas	Connection		G1/4" female threads					
	Pressure	bar	2.5-6.9					
	SSP flow	lmin <sup>-1</sup>	<12					
	Gas Ballast flow*	lmin <sup>-1</sup>	0-50					
Operating data	Noise	dB(A)	<76					
	Operating Temperature	°C	5-40		5-40		-20-40	
	Exhaust Back Pressure (Max)**	mbar	1200					
	System IP rating		IP54					
	Lubrication		Ultragrade Kinetic 150					

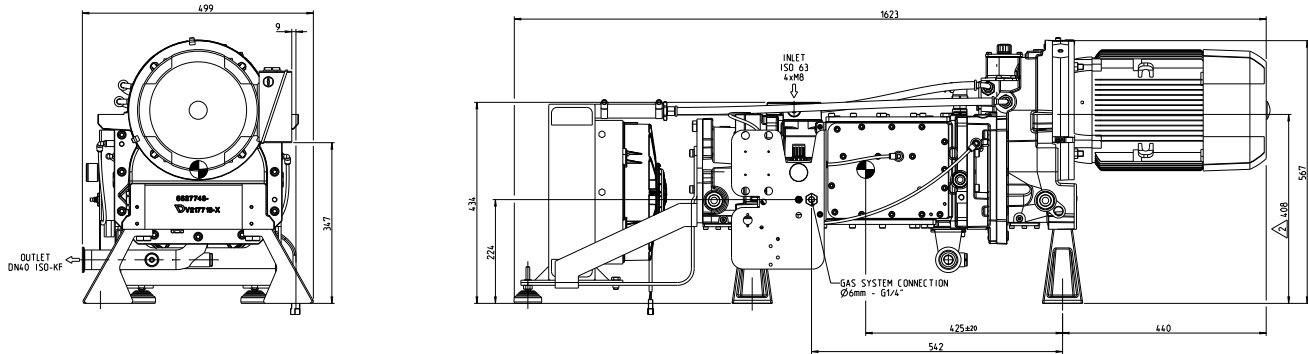
	Imperial					
	Water Cooled		Air Cooled		Chemical	
	200	300	200	300	200	300
CFM	124	>165	124	>165	124	>165
Torr	<0.04	<0.008	<0.04	<0.008	<0.04	<0.008
hp	5.5	6	5.5	6	5.5	6
hp	8.6	11	8.6	11	8.6	11
	ISO63				DIN80/3" ANSI	
	NW40				DIN50/2" ANSI	
	G1/2" female#				G1/2" female#	
galmin <sup>-1</sup>	<2.1				<2.1	
psig	100				100	
psig	7.25				7.25	
°F	41-104				41-104	
	G1/4" female threads#					
psig	36-100					
lmin <sup>-1</sup>	<12					
lmin <sup>-1</sup>	0-50					
dB(A)	<76					
°F	41-104		41-104		-4-104	
psia	17.4					
	IP54					
	Ultragrade Kinetic 150					

# Dimensions

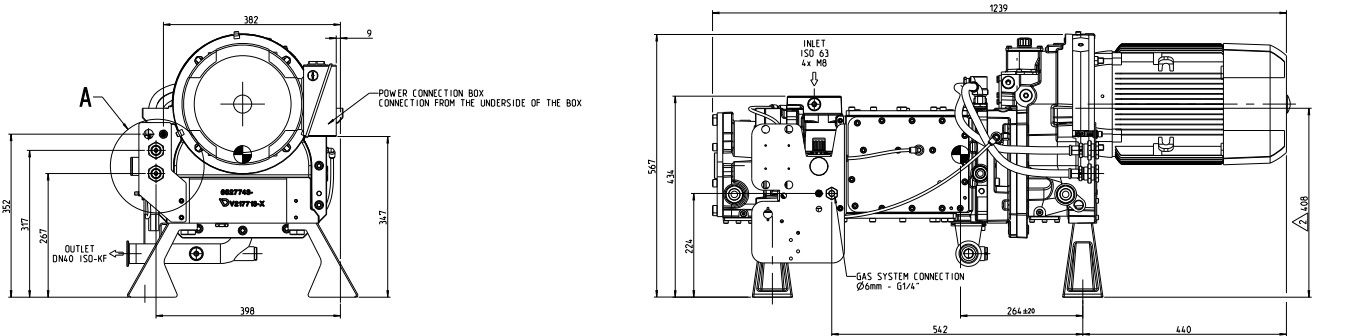
## EDS Chemical Indirect Water Cooled



## EDS Industrial Air Blast Cooled



## EDS Industrial Direct Water Cooled





www.rybsa.com.mx / rybsa@rybsa.com.mx  
Tel. (81) 8354 8005, (81) 8354 8051



## GLOBAL CONTACTS

Publication Number: 3602 104 8 01  
© Edwards Limited 2018. All rights reserved  
Edwards and the Edwards logo are trademarks of  
Edwards Limited

Whilst we make every effort to ensure that we  
accurately describe our products and services,  
we give no guarantee as to the accuracy or  
completeness of any information provided in  
this brochure.

Edwards Ltd, registered in England and Wales  
No. 6124750, registered office: Innovation Drive,  
Burgess Hill, West Sussex, RH15 9TW, UK.

### EMEA

<b>UK</b>	+44 1444 253 000 (local rate) 08459 212223
<b>Belgium</b>	+32 2 300 0730
<b>France</b>	+33 1 4121 1256
<b>Germany</b>	0800 000 1456
<b>Italy</b>	+ 39 02 48 4471
<b>Israel</b>	+ 972 8 681 0633

### ASIA PACIFIC

<b>China</b>	+86 400 111 9618
<b>India</b>	+91 20 4075 2222
<b>Japan</b>	+81 47 458 8836
<b>Korea</b>	+82 31 716 7070
<b>Singapore</b>	+65 6546 8408
<b>Taiwan</b>	+886 3758 1000

### AMERICAS

<b>USA</b>	+1 800 848 9800
<b>Brazil</b>	+55 11 3952 5000